

The North Star



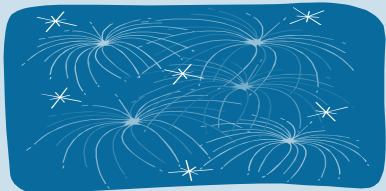
New at the Library:

Library Facelift:

Renovation of the 1st floor is proceeding rapidly. Some of the temporary walls have come down and work on the ceiling tiles is under way. The new circulation desk has been framed and sheetrocked. The walls to the new first floor computer lab are also up. Electrical wiring is the current focus. Daily photos of the construction progress are available through a link on the library's web page www.okcu.edu/library/.

New Student IDs: Be sure to stop by student accounts and get your new ID card. You will need the new ID card in order to use the library copiers/printers.

Media Search Box: Try out the new media search box at www.okcu.edu/library/mediasearch.aspx and send us comments on improvements to ejones@okcu.edu. The new search box limits to videos (DVD and VHS) only. You can even search by actor/actress name.



NEW EBSCO INTERFACE

Beginning this month EBSCOHost has a fresh new look and interface. This new look begins with a simplified basic search box. You can still click on "advanced search" to fill in the guided search boxes.

The results page has many new features. On the left is a column that allows you to narrow your search by source type or subject. The list of subjects is displayed in subject clusters, which you can click to narrow down your results. A date slider that limits your results to a specific date range is available as well.

Above the results list is a "breadcrumb trail" of

your search history. You can click on any term in the search history to begin a new search or delete terms to broaden your results. At any point you may return to any of your previous searches.

You can also choose to sort your results list by either relevancy or date. In addition you have the ability to preview an article without opening the record link.

A popular enhancement is that you can see images displayed in the results list. You can preview the images without opening the record first. These images can be

(Continued on page 2)

TRIVIA CONTEST

Describe 3 forms of PLAGIARISM?

Hint and Rules are listed on the website: www.okcu.edu/library/trivia.aspx

Archives Reading Room

Mon. - Fri. 9am-5pm
Sat.-Sun. Closed

For more information contact the Archivist, Christina Wolf, by emailing cwolf@okcu.edu or calling 208-5067

July Puzzle

			1			3	9
	2	1			4	5	
	8	7	9		6		2
				8	1		5
		6				3	
8	9	5		4	3	6	7
4			5		2	9	7
	6		4				
	7	3	8			2	1

Library Events:

Welcome new Theology and Information Literacy Librarian, Lee Webb (See article on page 2.) **1**

Independence Day—
Library CLOSED **4**

Trivia Contest Drawing **30**
2pm



July 2008 Calendar

S	M	T	W	T	F	S
		1 7:30am-9pm	2 7:30am-9pm	3 7:30am-9pm	4 CLOSED	5 10am-6pm
6 1pm-9pm	7 7:30am-9pm	8 7:30am-9pm	9 7:30am-9pm	10 7:30am-9pm	11 7:30am-6pm	12 10am-6pm
13 1pm-9pm	14 7:30am-9pm	15 7:30am-9pm	16 7:30am-9pm	17 7:30am-9pm	18 7:30am-6pm	19 10am-6pm
20 1pm-9pm	21 7:30am-9pm	22 7:30am-9pm	23 7:30am-9pm	24 7:30am-9pm	25 7:30am-6pm	26 10am-6pm
27 1pm-9pm	28 7:30am-9pm	29 7:30am-9pm	30 7:30am-9pm	31 7:30am-9pm		

New Books List-June

Twelve new titles were added to the collection last month. New books will be shelved with the regular collection during the 1st floor renovation.

Titles cover several subjects. All twelve titles are listed below. For a full listing of new titles in your subject area contact Elizabeth Jones at ejones@okcu.edu.

- *Women in Film Noir*
- *Research Papers*

- *Analyzing Bach Cantatas*
- *Economics and Politics of Race: an international perspective*
- *Major Peace Treaties of Modern History*
- *Show Music on Record: the first one hundred years*
- *Billboard Illustrated Encyclopedia of Music*
- *Song of Songs*
- *Man from Nebraska*
- *Economics of Intercollegiate Sports*
- *Sonaten Für Klavier zu zwei Händen*
By Elizabeth Jones

HELP!

We are currently designing new help web pages for searching the library's online catalog. The new pages will help guide you through a search to ensure you are getting the results you need. In addition the pages will redirect you to various services (Ebrary, WorldCat, inter-library loan, databases) in the event we do not own a print copy.

Please help us design the help pages! Send any comments or questions to Elizabeth Jones at ejones@okcu.edu.

Music Listening Library

The Music Library will be CLOSED for the summer.

For more information or to check-out music library items call the main library at 208-5068 or email askalibrarian@okcu.edu

Did You Know?

The library has added extra computers in rooms 304, 309, & 409 as well as an extra copier/printer on the 5th floor during renovation.

EBSCO CONT...

(Continued from page 1)

photographs, tables, graphs, or other illustrations in the articles. Related images are displayed as well.

Another very useful feature is the improved citation help. By clicking on the citation icon, all the citation methods, such as APA and MLA will be displayed. Make sure to always double check capitalization and dates be-

cause there can be errors in the automated system.

Another new feature in EBSCOHost is the display of related articles from the Newsbank database.

This new interface will make EBSCOHost more intuitive and easier to use. For an overview of the new features click the "New Features" link at the top of an EBSCO page.

By Edwin Wiles

NEW LIBRARIANS

Welcome two new librarians to our staff, Mr. Lee Webb (Theology and Information Literacy Librarian) and Ms. Abigail McBirnie (Music Librarian.)

Mr. Webb will work with the Seminary program, serve as the liaison to the religion department, and work to implement a new information literacy program. He starts on July 1st.

Ms. McBirnie will be mov-

ing from England to join us. She will be the new liaison for the music department and will also be a member of the music school faculty. She starts on August 8th.

6	5	4	1	2	8	7	3	9
9	2	1	3	7	4	5	8	6
3	8	7	9	5	6	1	4	2
7	3	2	6	8	1	4	9	5
1	4	6	7	9	5	3	2	8
8	9	5	2	4	3	6	7	1
4	1	8	5	3	2	9	6	7
2	6	9	4	1	7	8	5	3
5	7	3	8	6	9	2	1	4

Please submit any Suggestions/Questions/Comments about the Library or the Library's Newsletter to the Library Suggestion Box located on the South end of the circulation desk.